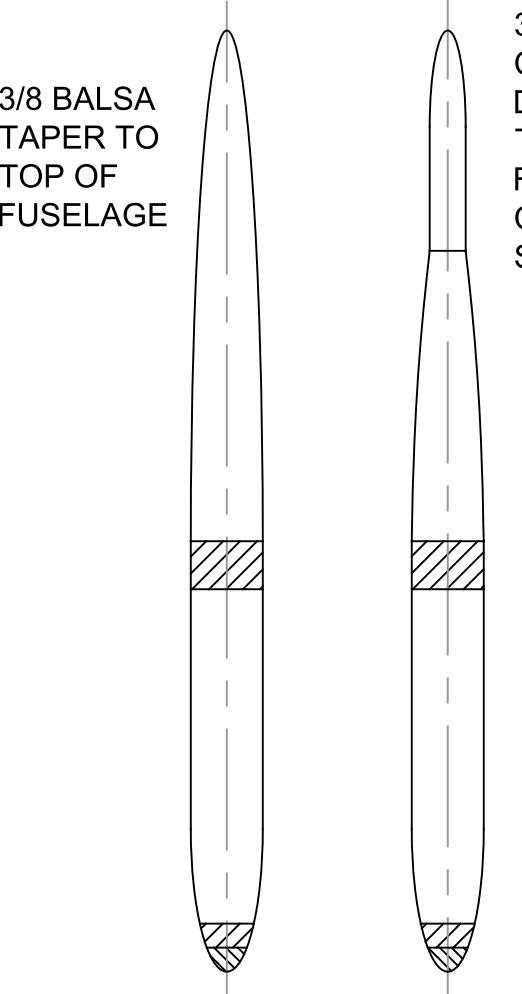
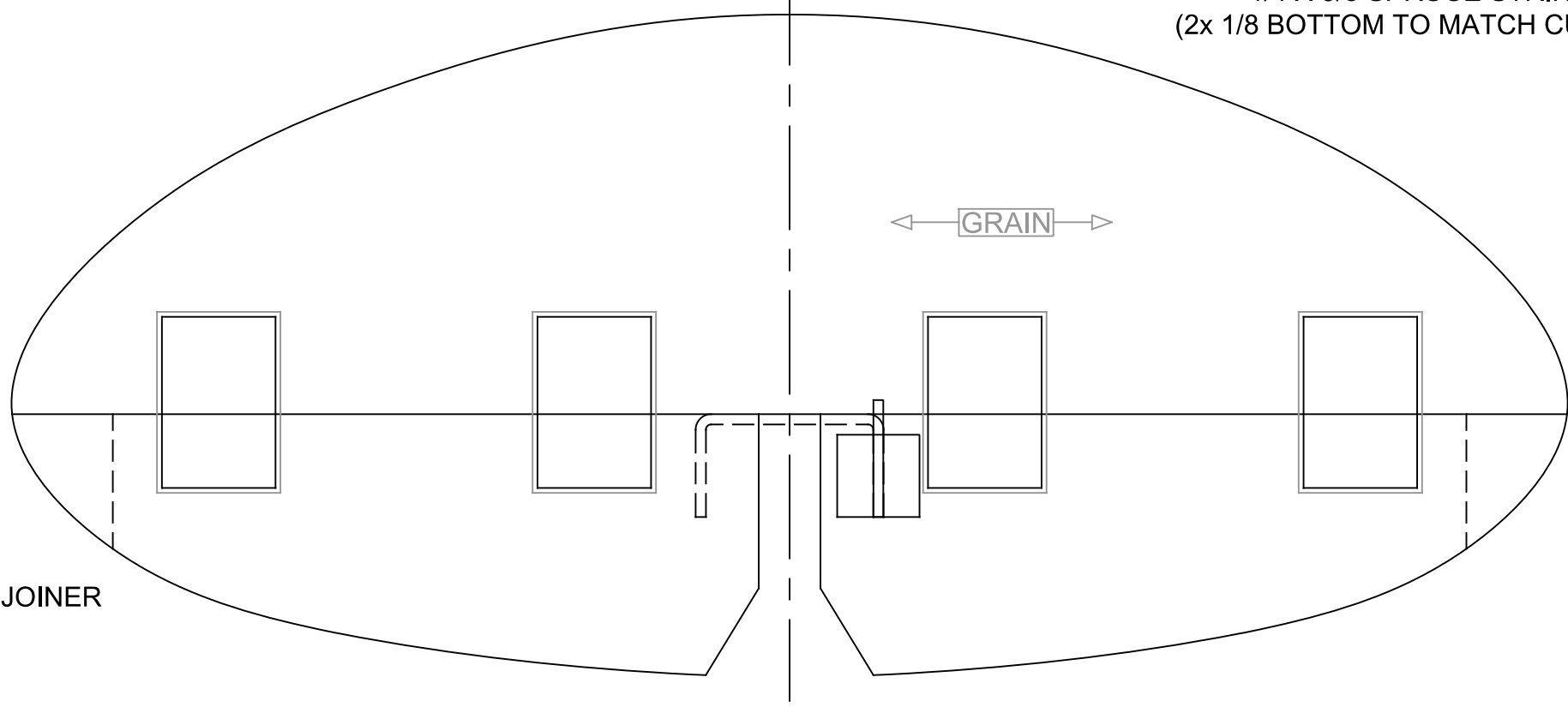
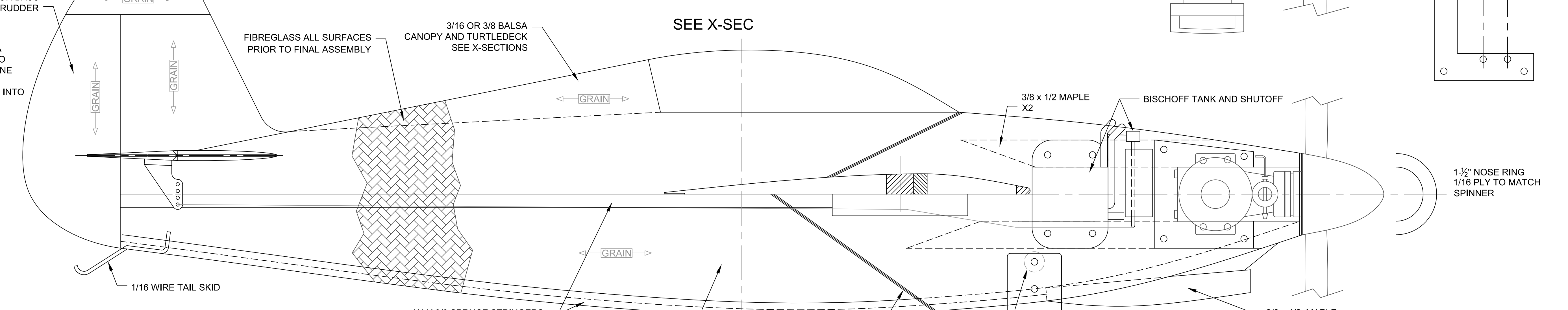
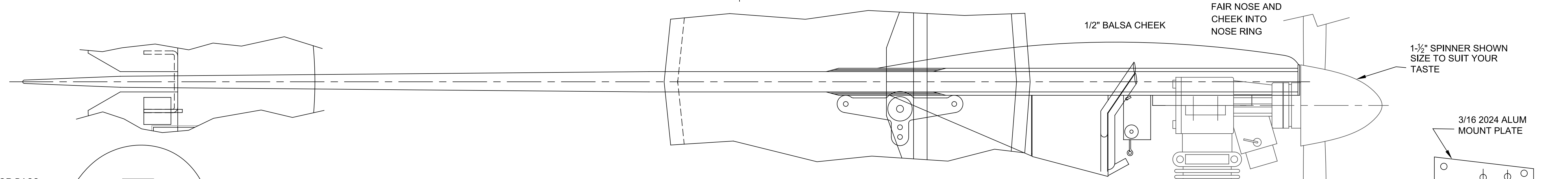
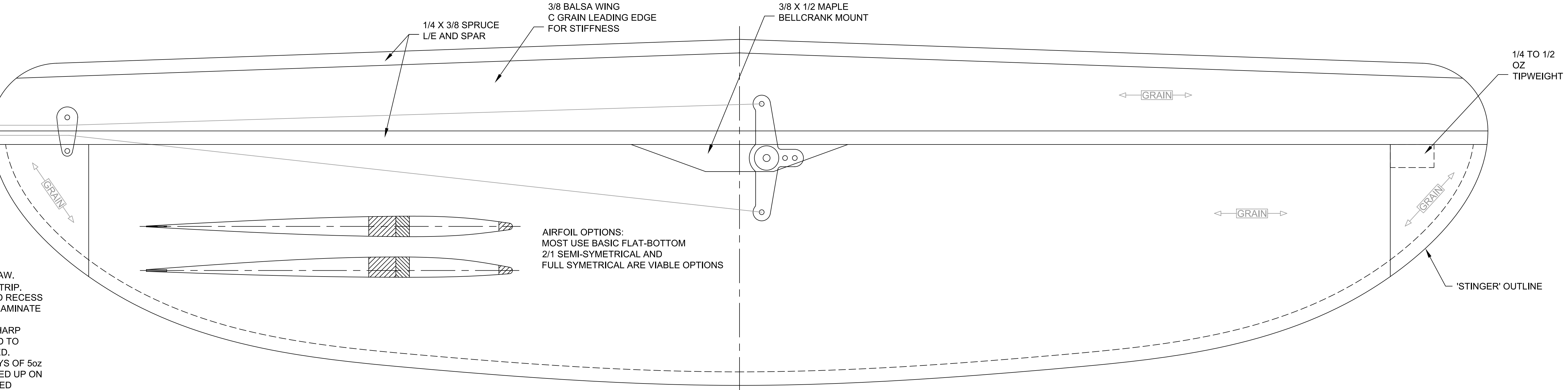


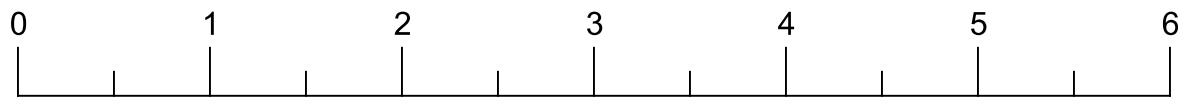
DUBRO / GOLDBERG TIP SKID
MODIFIED FOR LEADOUT GUIDE
USE LINE RAKE CALCULATOR
ON NCLRA WEBSITE TO PLACE GUIDE

TRAILING EDGE OPTIONS:
CARVE GROOVE WITH RAZOR SAW.
INLAY $\frac{1}{64}$ OR $\frac{1}{32}$ PLY X $\frac{3}{8}$ " WIDE STRIP.
ON FLAT BOTTOM AIRFOIL, SAND RECESS
INTO TRAILING EDGE BOTTOM, LAMINATE
PLY TRAILING EDGE.
SAND TO THE PLYWOOD FOR SHARP
EDGE. $\frac{1}{8}$ x $\frac{1}{4}$ SPRUCE SANDED TO
SHAPE IS ALSO COMMONLY USED.
STRIP CAN BE MADE FROM 3 PLYS OF 5oz
GLASS OR CARBON CLOTH, LAYED UP ON
FLAT SURFACE. (VACUUM BAGGED
PREFERABLE.)

AIRFOIL OPTIONS:
MOST USE BASIC FLAT-BOTTOM
2/1 SEMI-SYMETRICAL AND
FULL SYMETRICAL ARE VIABLE OPTIONS



$\frac{1}{32}$ " PLY STAB CORE
CUT OUT FOR HINGES AND JOINER
FACE WITH $\frac{3}{32}$ " Balsa
SAND TO AIRFOIL



Sport Scale Racer designed by Gerry van Dyk
© 2025 Gerry van Dyk
structure based on Mayer / Bischoff designs

visit: <https://nclra.org/Plans>
for other Sport Goodyear plans.

Bill Bischoff Racing Supplies. Fuel Tanks, Venturis
Landing Gear, Shutoffs contact: billbisch@hotmail.com

Fuselage = 23.58"
Wing Span = 27.60"
Stab Span = 9.85"
Wing Area = 146.6 in sq
Stab Area = 29.2 in sq

Al Williams' 21 W-17 Stinger