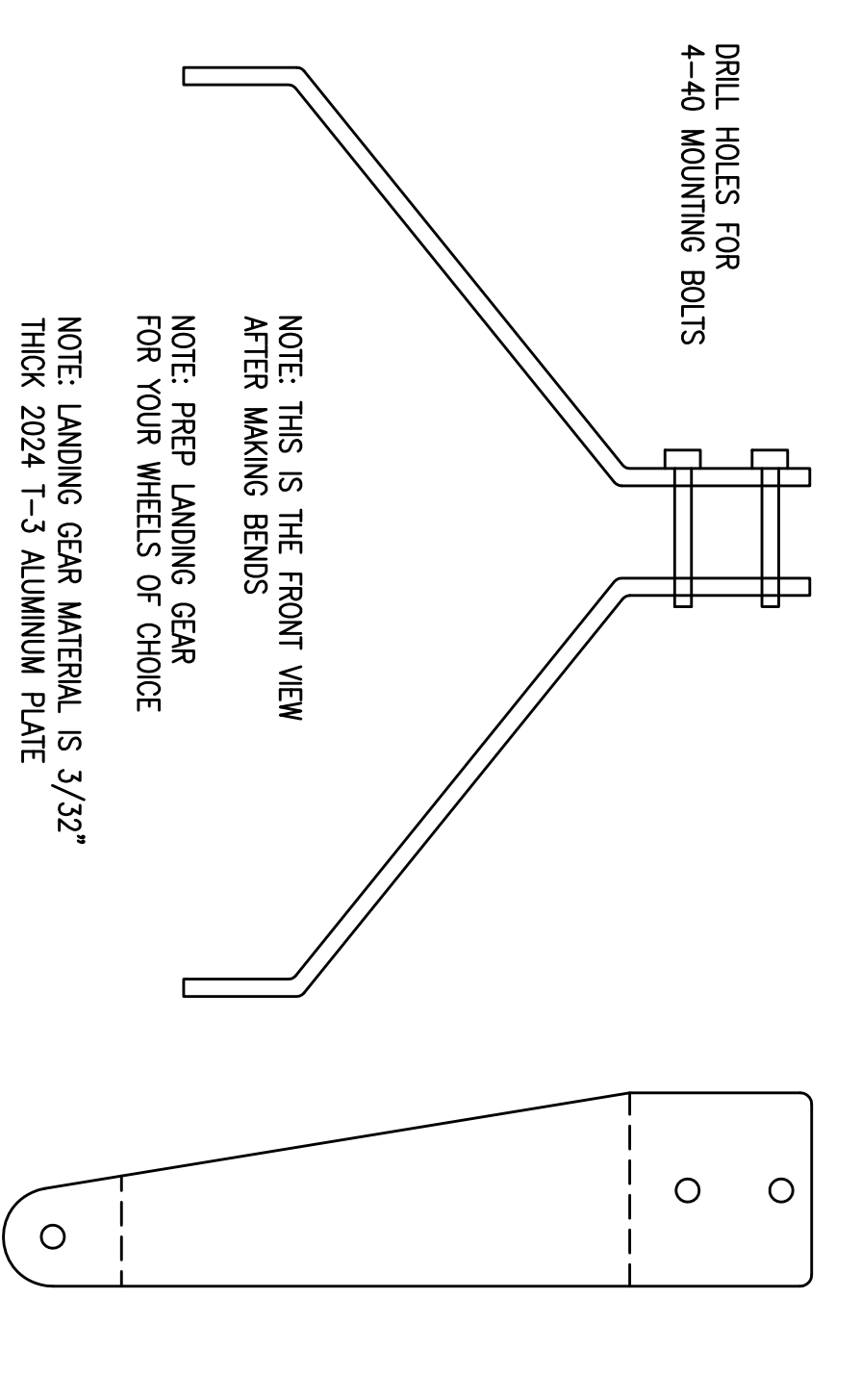
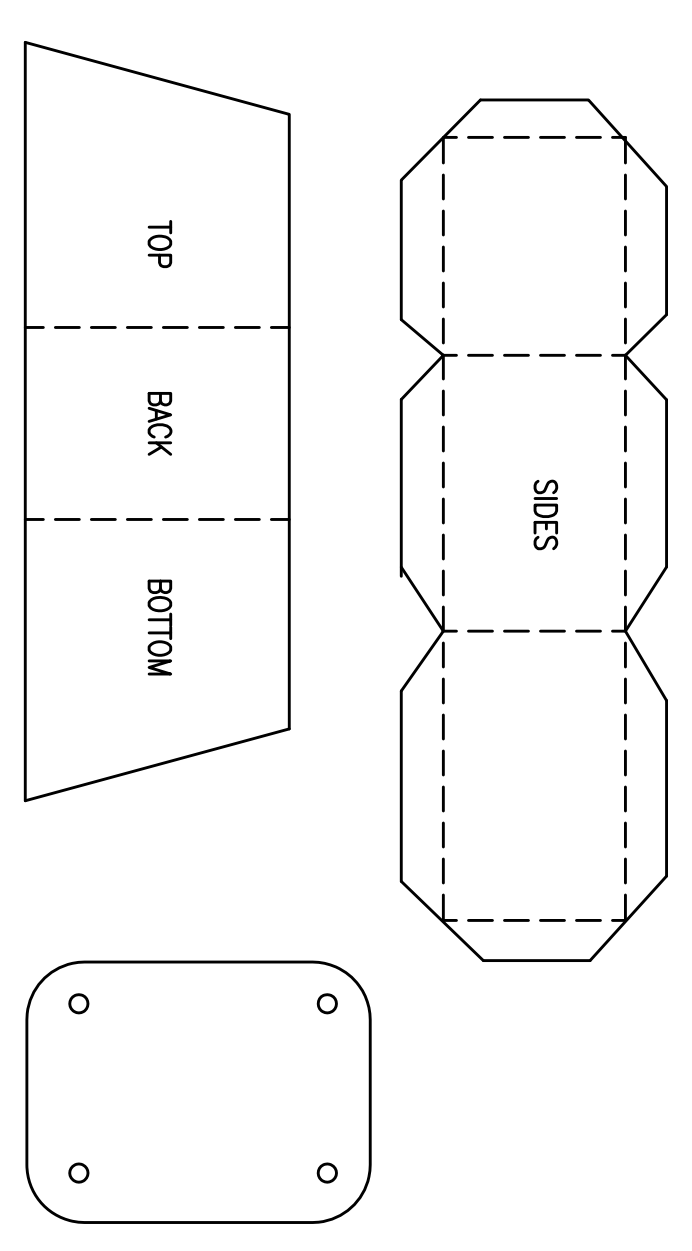


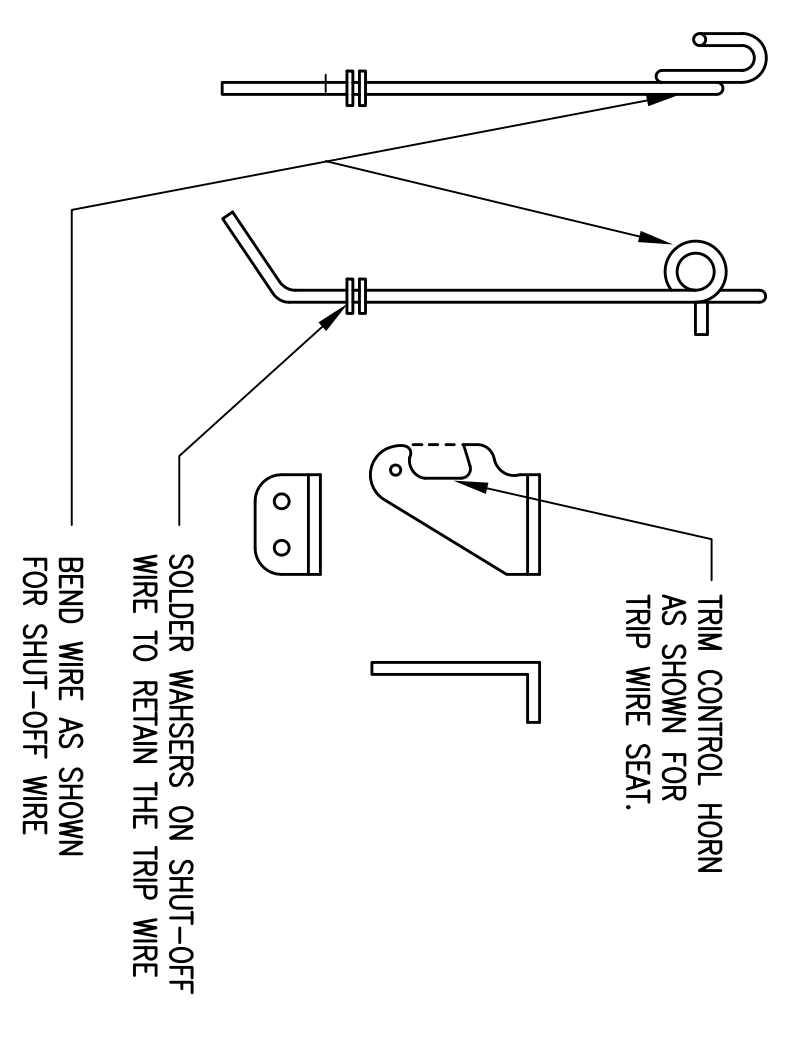
**LANDING GEAR TEMPLATES**



**FUEL TANK TEMPLATES**



**SHUT-OFF PARTS**



1/16" PLYWOOD NOSE RING  
 3/8" X 1/2" MAPLE MOTOR MOUNTS  
 TOP AND BOTTOM  
 3/8" MAPLE "MASCOP"  
 1/16" PLYWOOD FUSELAGE DOUBLERS (BOTH SIDES)  
 FUEL SHUT-OFF - SEE DETAILS  
 FUEL SHUT-OFF TRIP WIRE  
 FUEL TANK  
 INSTALL 3/8" DOWELS IN FUSELAGE CORE FOR 4-40 LANDING GEAR MOUNTING BOLTS  
 LANDING GEAR - SEE DETAILS  
 NOTE OPENING IN FUSELAGE FOR BELLRANK  
 1/16" PLYWOOD FUSELAGE DOUBLERS (BOTH SIDES)  
 SOLDER SHUT-OFF TRIP WIRE TO PUSHROD  
 SIDE VIEW OF WINGIP LAYOUT  
 DRILL HOLES FOR 4-40 MOUNTING BOLTS  
 NOTE: THIS IS THE FRONT VIEW AFTER MAKING BENDS  
 NOTE: PREP LANDING GEAR FOR YOUR WHEELS OF CHOICE  
 NOTE: LANDING GEAR MATERIAL IS 3/32" THICK 2024-13 ALUMINIUM PLATE  
 NOTE: THIS IS A TRUE FLAT TEMPLATE BEFORE MAKING BENDS  
 1/2" Balsa CHEEK CORN SAND TO ROUND SHAPE  
 1/16" PLYWOOD NOSE RING  
 3/2" 2024-13 ALUMINIUM MOTOR MOUNT PLATE  
 FUEL SHUT-OFF  
 3/8" HARD Balsa FUSELAGE CORE  
 1/16" PLYWOOD FUSELAGE DOUBLERS (BOTH SIDES)  
 FUEL TANK  
 FUEL TANK FAIRING  
 3/8" X 1/4" SPRUCE LEADING EDGE  
 3/8" MEDIUM Balsa  
 1/4" X 3/8" SPRUCE SPAR  
 3/8" X 1/2" MAPLE BELLRANK MOUNT  
 BELLRANK MID. UNDER WING W/ FLUSH BLINDOUT ON TOP (FOX SMALL BELLRANK)  
 3/8" SOFT Balsa  
 1" X 8" SPRUCE TRAILING EDGE  
 Balsa CANOPY  
 3/8" HARD Balsa WINGIPS, NOTE GRAIN DIRECTION  
 1/2 OUNCE WINGIP WEIGHT  
 NOTE: FIBERGLASS ENTIRE WING TOP & BOTTOM W/ 2 OZ FIBERGLASS  
 1/8" BASSWOOD STABILIZER, CROSSGRAIN TIPS  
 1/16" HOLES FOR ELEVATOR HINGES  
 1/8" BASSWOOD ELEVATOR  
 1/16" PIANO WIRE  
 1/8" BASSWOOD FIN & RUDDER, NO OFFSET  
 1/8" BASSWOOD FIN & RUDDER  
 NOTE GRAIN DIRECTIONS  
 1/8" BASSWOOD CROSSGRAIN TIP

**MARGARET JUNE**

RACE # 99 - PILOT & OWNER KENT CASSELS

© COPYRIGHT 2018 BY DOUGLAS MAYER

PRINT DATE - 10/26/18

FUSELAGE = 22-3/4"  
 WING = 29-1/2"  
 STABILIZER = 8-3/8"  
 WING AREA = 145 SQ. IN.  
 STABILIZER AREA = 31 SQ. IN.

BILL BISCHOFF RACING SUPPLIES, FUEL TANKS, VENTURIS,  
 LANDING GEAR = BILLBISCH@HOTMAIL.COM  
 PLANS - DOUGLASMAYER88@GMAIL.COM

PRINT PAPER SIZE 30" X 42"

